



NOLAN CATHOLIC HIGH SCHOOL

2025-2026 Back-to-School Guide

New Student Orientation
August 12, 2025

First Day of School
August 13, 2025

Table of Contents

Welcome Back! 2

August At-a-Glance 2

Important Dates: 2025-2026 School Year 3

Fundraising Events Calendar 3

School Hours and Bell-to-Bell Schedule 4

New Student Orientation..... 5

First Day of School 6

Uniform Expectations 7-8

Drop-off, Pick-up Information 9

Communication Tools 10

Technology and Textbooks 11

Backpack and Cell phone Policy 11

Student Life (Athletics, Extracurriculars, Clubs, and Organizations) 12

Sacramental Life on Campus..... 12

From the Nurse 13

ECI Lunch Information 13

Viking Club and Parent Involvement..... 14

Welcome Back!

Dear Viking Families,

Welcome to a new school year at Nolan Catholic High School! Whether you are returning or joining us for the first time, we are truly blessed to walk alongside you in this journey of faith and learning. This Back to School Guide is designed to give you everything you need to begin the year with confidence.

We pray for a school year filled with academic growth, spiritual formation, and joyful community. May our students embrace intellectual excellence, seek Christ in all things, and live each day with the heart of a servant.

Please know that our Administration and Principal's Office team is always here for you. We are committed to supporting your family and walking with you through every step of the school year. If you have questions, need assistance, or simply want to connect, our doors, phones, and hearts are always open.

Thank you for entrusting us with the gift of your children. We look forward to a year of faith, excellence, and Viking pride!

In Christ,

Nolan Catholic Administration Team

Go Vikings!

August At-a-Glance

August 1-11	Faculty and Staff In-Service	
August 6	Esto Dux Social (Must attend one night)	6:30 PM-8:30 PM
August 7	Esto Dux Social (Must attend one night)	6:30 PM-8:30 PM
August 8	Meet the Vikings	6:00 PM
August 9	Black Coffee Brotherhood: Operation Re-Mulch	8:00 AM - 1:00 PM
August 9	Fall Sports and Senior Athletes Media Day	8:00 AM-12:00 PM
August 12	Senior Sunrise	6:00 AM
August 12	New Student Orientation	
August 13	First Day of School (All Students)	
August 15	First All School Mass	
August 20	Senior Parent Meeting	5:30 PM
August 20	Back-to-School Night	6:00 PM
August 24-30	Welcome Week	
August 29	Fall Sports Pep Rally	
August 29	Football Season Opener at Home	7:30 PM

Important Dates: 2025-2026 School Year

August 1st- 12th	Nolan Faculty/Staff In-Service
August 4th	Diocesan Convocation
August 12th	New Student Orientation Day (9th grade and new-to-Nolan students)
August 13th	First Day of School (All Students - Dress grey uniform)
August 20th	Back-To-School Night (Open House- 6:30 PM-8:30 PM)
August 25th-30th	Welcome Week
September 1st	NO SCHOOL- Labor Day
October 9th	End of 1st Quarter
October 10th	NO CLASSES- Diocesan In-service
October 15th	PSAT/Vikathon- Early Dismissal (11:45AM), no classes
November 3rd-7th	Homecoming Week
November 24th-28th	NO SCHOOL- Thanksgiving Break
December 15th	End of 2nd Quarter
December 16th-19th	Fall Semester Exams- Early Dismissal (11:45AM)
Dec. 22nd- Jan. 2nd	NO SCHOOL- Christmas Break
January 5th	NO CLASSES- Faculty/Staff In-Service
January 6th	Classes Resume; Start of 3rd Quarter
January 19th	NO SCHOOL- MLK Day Holiday
February 7th	NCHS Dinner and Auction (Hurst Conference Center, 6:30 PM)
February 16th	NO CLASSES- Diocesan In-Service
March 13th	End of 3rd Quarter- Early Dismissal (11:45 AM)
March 16th-20th	NO SCHOOL- Spring Break
April 3rd	NO SCHOOL- Good Friday
April 6th	SNOW DAY- Easter Monday
April 7th	SNOW DAY- Easter Tuesday
May 18th-21st	Senior Exams
May 22nd	End of 4th Quarter- Early Dismissal (11:45 AM)
May 22nd-24th	Graduation Weekend
May 25th	NO SCHOOL- Memorial Day Holiday
May 26th-29th	Spring Semester Exams- Early Dismissal (11:45AM)

Fundraising Events Calendar

November 21, 2025	Grandparents Day
December 2, 2025	iGive Catholic on Giving Tuesday
February 14, 2026	Nolan Catholic Gala and Auction
April 10, 2026	6th Annual Viking Club Classic Golf Tournament

School Hours

Regular Hours of Operation

Office Hours: 7 AM to 4 PM

School Day Hours: Mon., Tue., Thurs., Fri. - 7:55 AM to 3:15 PM

Wed. - 7:55 AM to 2:45 PM

Before-school Supervision from 7 AM to 7:30 AM

After-school Supervision from 2:45 PM to 5:30 PM

Students must be dropped off no earlier than 7 AM and picked up prior to 5:30 PM

On early dismissal days, campus will close 30 minutes after dismissal time.

August 1-11 Faculty and Staff In-Service Hours

Office Hours: 8 AM - 3 PM

Closed: August 4 for Diocesan Convocation

Holidays - CAMPUS CLOSED

September 1 - Labor Day

November 24-28 - Thanksgiving Break

December 22-January 2 - Christmas Break

January 19 - MLK Jr. Day

March 16-20 - Spring Break

April 3 - Good Friday

April 6-7 - Snow Days

May 25 - Memorial Day

Bell-to-Bell Schedule

Monday-Anselm		
A pd.	7:55 AM	8:45 AM
B pd.	8:50 AM	9:35 AM
C pd.	9:45 AM	10:30 AM
D pd.	10:35 AM	11:25 AM
E1	11:30 AM	11:57 AM
R pd.	12:02 PM	12:15 PM
L2	12:18 PM	12:45 PM
F pd.	12:50 PM	1:35 PM
G pd.	1:40 PM	2:25 PM
H pd.	2:30 PM	3:15 PM

Tuesday-Bede		
B pd.	7:55 AM	9:25 AM
C pd.	9:30 AM	11:00 AM
D1	11:05 AM	11:35 AM
D pd.	11:40 AM	12:30 PM
D2	12:35 PM	1:05 PM
Collegium	1:10 PM	1:40 PM
A pd.	1:45 PM	3:15 PM

Wednesday-Edith		
E pd.	7:55 AM	9:25 AM
F pd.	9:35 AM	11:05 AM
G1	11:10 AM	11:40 AM
G pd.	11:45 AM	12:35 PM
G2	12:40 PM	1:10 PM
H pd.	1:15 PM	2:45 PM

Thursday-Crispin		
C pd.	7:55 AM	9:45 AM
Mass	9:25 AM	10:25 AM
D1	10:35 AM	11:07 AM
D pd.	11:12 AM	11:52 AM
D2	11:57 AM	12:30 PM
A pd.	12:35 PM	1:50 PM
B pd.	1:55 PM	3:15 PM

Commons/Library opens at 7:00am each day
Commons closes at 5:30 each day

Daily Mass:
Wednesdays at 7:10am (Chapel) when available

Friday-Felix		
F pd.	7:55 AM	9:15 AM
Collegium	9:20 AM	9:40 AM
G pd.	9:45 AM	11:05 AM
H1	11:10 AM	11:40 AM
H pd.	11:45 AM	12:25 PM
H2	12:30 PM	1:00 PM
House Time	1:05 PM	1:50 PM
E pd.	1:55 PM	3:15 PM

Pep Rally Schedule		
F pd.	7:55 AM	9:15 AM
Collegium	9:20 AM	9:40 AM
G pd.	9:45 AM	11:05 AM
H1	11:10 AM	11:40 AM
H pd.	11:45 AM	12:25 PM
H2	12:30 PM	1:00 PM
E pd.	1:05 PM	2:25 PM
Pep Rally	2:35 PM	3:15 PM

Exam Schedule		
1st Exam	8:30 AM	10:00 AM
2nd Exam	10:15 AM	11:45 AM

New Student Orientation

Welcome to Nolan Catholic! Whether you're joining us as a 9th-grade Viking or transferring in as a new upperclassman, we are so excited to welcome you. The first day of school can feel like a lot, but don't worry. We've got you!

Here's everything you need to know to have a smooth and successful start:

Freshmen Orientation Day

Tuesday, August 12, 2025

Arrival & Morning Details

- Gates open at 7 AM
- 7:30 AM - 7:55 AM Students will check-in in the Circle Drive (Commons), visit their lockers for their house assignments, and report to A period
- Be in your A Period class by 7:55 AM

Uniform Expectations

- This is **not** a Mass Day. Please wear your Blue Out/Class Shirt and jeans.

Freshmen will:

- Attend a Welcome Assembly
- Meet their House community and teachers
- Get tech support for school accounts
- Learn about campus ministry, school expectations, and how to navigate the year ahead
- Rotate through their daily class schedule
- Participate in prayer and a final dismissal at noon

What to Bring:

- Backpack (to store items in lockers)
- Water bottle

Dismissal and Pick-up Details

- Students will be dismissed at noon
- Please see page 9 for designated pick-up areas

Transfer Student Orientation Day

Tuesday, August 12, 2025

Arrival & Drop-off Details

- Begins at 1 PM in the Commons

Uniform Expectations

- This is **not** a Mass Day.
- Please wear a uniform shirt, Nolan Catholic spirit shirt, or school appropriate shirt and jeans.
- A Nolan Catholic spirit shirt will be provided.

Transfer students will:

- Be greeted by our Student Ambassadors
- Receive school account access
- Set up Naviance and X2VOL
- Learn about the House System
- Tour campus and locate lockers/classrooms
- Meet with Guidance if needed

What to Bring:

- Backpack (to store items in lockers)
- Water bottle

Dismissal and Pick-up Details

- Students will be dismissed at 3:15 PM
- Please see page 9 for designated pick-up areas

First Day of School (All Students)

First Full Day of School

Wednesday, August 13, 2025

Arrival & Morning Details

- Doors open at 7 AM
- Students must be in their A period class by 7:55 AM
- School ends at 3:15 PM
- Students will attend their full A–H class schedule on the first day.

Uniform Expectations

- Dress Grey Uniform is required

Pro Tips for a Smooth Start:

- Leave extra time for parking or carline the first few days
- Review your class schedule in advance and ask for help if you're unsure
- Be open to meeting new people, learning routines, and embracing your House community
- Check your school email daily for updates

What to Bring:

- Backpack (to store items in lockers)
- A refillable water bottle
- Your locker combo or location (you'll get this at Esto Dux Social!)
- A great attitude, this is the beginning of something amazing!

First Day of School Schedule - Wednesday, August 13

	Chaminade	Damiano	Namur	Shamrock	Siena	Subiaco
7:55 - 8:00	A Period					
8:15 - 8:30	Welcome Assembly					
8:35 - 9:15	ID Pictures		House Meeting		School Overview	
9:20 - 10:00	House Meeting		School Overview		ID Pictures	
10:05 - 10:45	School Overview		ID Pictures		House Meeting	
10:50 - 11:15	A Period					
11:20 - 11:45	B Period / B1 Lunch					
11:50 - 12:15	B Period / B2 Lunch					
12:20 - 12:45	C Period					
12:50 - 1:15	D Period					
1:20 - 1:45	E Period					
1:50 - 2:15	F Period					
2:20 - 2:45	G Period					
2:50 - 3:15	H Period					

Uniform Expectations

At Nolan Catholic, our school uniform reflects our commitment to excellence, respect, and unity. Below is a quick guide to help you prepare for the year, what to wear, when to wear it, and what's allowed.

Young Men's Uniform Guide

Dress Gray Uniform (Mass Days)

- Gray slacks
- White Oxford shirt (tucked in)
- Nolan Catholic tie
- Navy or black blazer (required in Q2, Q3, and Q4)
- Optional: Navy sweater or sweater vest
- Black leather belt
- Black, gray, or white crew socks
- Dress shoes: black loafers or Sperry Billfish



Regular Uniform

- Slacks in khaki, navy, or gray
- White or blue Oxford shirt OR short-sleeve navy polo (tucked in)
- Black or brown leather belt
- Approved shoes: black loafers, Sperry Billfish, or all-white or all-black athletic shoes
- Optional: Juniors and Seniors may wear the long-sleeved striped rugby

Reminder: A uniform shirt must be worn under any outerwear.



Outerwear Guidelines (All Students)

Dress Gray Days (Q2, Q3, Q4)

- Only approved outerwear: Navy or black blazer
- Sweaters may be worn under the blazer, but not in place of it.

Regular School Days

Approved outerwear includes:

- Navy or black blazer
- Navy pullover sweater, sweater vest, or cardigan
- Nolan Catholic sweatshirts or jackets from the NCHS Spirit Store or school organizations

Not allowed: hoodies of any kind

Must wear a uniform shirt underneath all outerwear.

Uniform Expectations

Young Ladies' Uniform Guide

Dress Gray Uniform (Mass Days)

- Gray skirt or jumper
- White Oxford shirt (tucked in)
- Navy or black blazer (required in Q2, Q3, and Q4)
- Optional: Navy sweater or sweater vest
- Black, gray, or white socks, knee socks, or solid black leggings (required in cold weather)
- Black leggings are required:
 - During colder months
 - If the skirt does not meet the length requirement
 - If anything is worn under the skirt—it must be solid black leggings (no patterns or colors)
- Dress shoes: black and white saddle oxfords, or Sperry Koifish



Regular Uniform

- Navy, plaid, or gray skirt or jumper
- White or blue oxford shirt (tucked in)
- Black, gray, or white socks, knee socks, or solid black leggings (in cold weather)
- Shoes: saddle oxfords, Sperry Koifish, or all-white or all-black athletic shoes
- Optional: Juniors and Seniors may wear the long-sleeved striped rugby



Shoes: Athletic Option Guidelines

New this year, athletic shoes are allowed with the regular uniform but must be:

- All-white or all-black
- Matching soles, body, laces, and logo
- Laced (no slides, high-tops, or platform styles)



Drop-off, Pick-up, and Transportation

Drop-Off Instructions

The West Gate will be opened and cones put in drop-off configuration by approximately 7 AM on each school day. PLEASE drop off your student in the areas on the map marked in RED only.

If you choose to drop-off your student between 7:45 AM-8:00 AM, there will a significant amount of both drive traffic and foot traffic

The Circle Drive will be closed off to vehicular traffic and the cones at the front and west gates will be removed, and the West Gate closed, at the beginning of the school day. (Generally, at 8:00 AM)

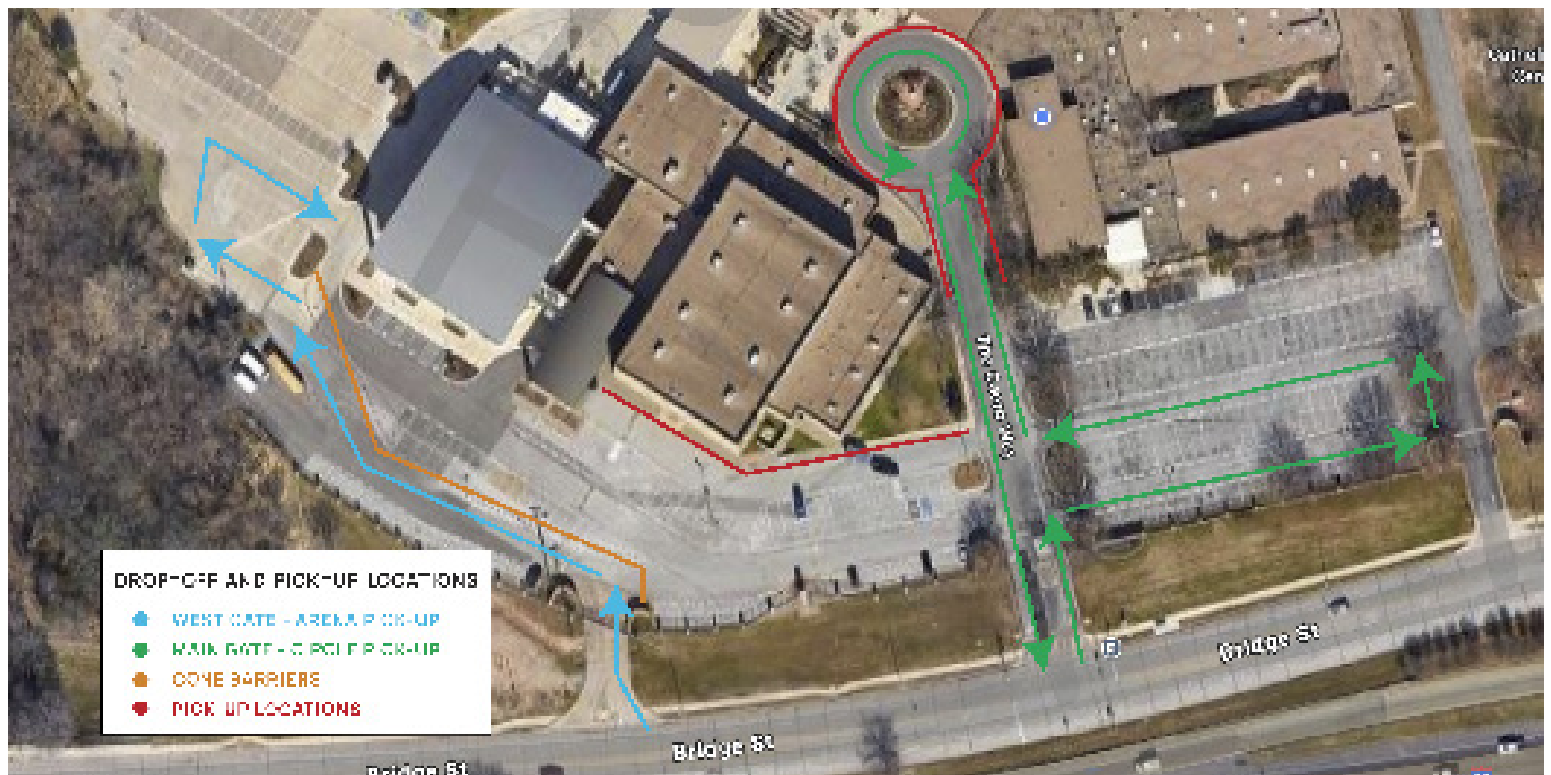
Pick-Up Instructions

The Circle Drive will be made available for preparation for student pick up at approximately 30 minutes before the end of the school day. In all cases, the Circle Drive will not be made available until AFTER the last class of the day begins and there is no more passing period “foot traffic” in the Circle Drive area. PLEASE pick up your student in the areas on the map marked in RED only.

The West Gate will be opened and cones placed in pick-up configuration 10 minutes prior to the end of the school day. The west gate will generally be left open for 30 minutes after the end of the school day.

Traffic Flow Expectations for Pick-Up & Drop-Off:

- Always pull forward as far as possible to keep the line moving efficiently.
- Remain in your vehicle during both drop-off and pick-up to avoid delays.
- Students may not walk across the Circle Drive—please use designated crosswalks and sidewalks.
- Do not pull into a main parking lot space during active drop-off or pick-up. This disrupts the flow of traffic and creates safety hazards.
- Please respect the 10 MPH posted speed limit at all times while driving on campus.
- Follow all staff and volunteer directions to ensure a safe and smooth process for everyone.



Communication Tools

Nolan Catholic School App

Your go-to hub for quick access to everything Nolan Catholic! Stay connected with school news, events, bell schedules, lunch menus, athletic calendars, and important announcements. Enable notifications to receive real-time updates from the school so you never miss a moment.

Download the app today! Just search “Nolan Catholic High School” in the Apple App Store or Google Play!

RenWeb

Access your student’s academic life in one place — grades, attendance, behavior reports, and teacher communications. You’ll also find the school directory, class schedules, and gradebook here.

FACTS

Used for managing tuition, fees, and incidental billing. Log in to view statements, make payments, and set up payment plans. For questions, contact Kimberlee Glover in the Business Office at kglover@nchstx.org.

School Talk weekly email newsletter

Our weekly email newsletter is sent every Friday through Constant Contact to keep families informed. It includes school news, upcoming events, important reminders, and updates from administration.

Important: If you unsubscribe from Constant Contact emails, you will not receive these weekly communications. Please be sure to stay subscribed so you don’t miss important information!

Parent Alert

Emergency text message system used for urgent updates only, such as weather closures, safety alerts, or emergency announcements. Please ensure your contact information is up to date in FACTS/RenWeb to receive these messages.



SportsYou

Used by our athletic teams to share game schedules, practice times, and updates from coaches. Be sure to join your team’s group to receive real-time info throughout the season.

Follow us on Social Media

Stay connected and celebrate all things Viking! Follow us for student highlights, campus life, alumni news, athletic updates, and more.

 Facebook: [@NolanCatholicHighSchoolOfficialPage](https://www.facebook.com/NolanCatholicHighSchoolOfficialPage)

 X (Twitter): [@NolanCatholic](https://twitter.com/NolanCatholic)

 Instagram: [@nolancatholic](https://www.instagram.com/nolancatholic)

Technology, Textbooks, and School Supplies

Update: Technology Policy

Nolan Catholic High School is implementing important changes to enhance our academic environment and ensure a focused, distraction-free learning experience for all students.

Starting this school year, students may not bring personal electronic devices — including tablets, smartwatches, or other internet-enabled devices — onto campus. All learning and communication will take place using school-issued devices, which are designed and monitored to support our educational mission.

Additionally, streaming movies, videos, or other entertainment content on school devices will no longer be permitted on campus. All videos used for academic purposes will be carefully selected and approved by teachers to ensure they directly support classroom learning.

Textbooks | Online Bookstore

Textbooks may be purchased online through our official bookstore: bnck-12.com/nolancatholics.

Please have your student's class schedule handy to ensure you select the correct books for each course.

School Supplies

At Nolan Catholic, there is no universal school supply list for all students. Instead, each teacher will inform students of any specific supplies needed for their class during the first week of school.

Students should arrive on the first day with basic essentials such as pens, pencils, and a notebook or binder, and be prepared to add items as directed by their teachers.

Backpack and Cell phone Policy

To maintain a focused and academically rigorous environment, all cell phones must be kept in students' backpacks, stored in their lockers at all times during the academic day. This rule applies from the moment students enter the academic building, including time spent in the commons area in the morning.

Backpacks must also remain in lockers throughout the school day. Students should retrieve necessary materials during passing periods but may not carry backpacks to class.

Cell phones are not to be used during passing periods or at any other time during the school day. Visible phones during passing periods or at lockers will be confiscated and returned according to school policy.

Adhering to these guidelines is crucial for promoting the well-being and academic success of our students. By minimizing distractions, we create a more engaged and productive learning environment that allows our students to fully benefit from the educational opportunities provided at Nolan Catholic.

Student Life and Sacramental Life on Campus

Getting Involved

Life at Nolan Catholic goes far beyond the classroom. With a wide range of clubs, organizations, and activities, every student has the opportunity to explore interests, develop talents, and build lasting friendships. If you are interested in joining a club or getting involved in student life, contact the club's moderator directly. For general questions or help getting started, reach out to [Assistant Principal, Ms. Jung](mailto:cjung@nchstx.org) (cjung@nchstx.org).

If you're interested in participating in athletics, please contact the [Athletic Department](mailto:athletics@nchstx.org) (athletics@nchstx.org) — we're here to help you get connected.

Sacramental Life on Campus

Welcome to Campus Ministry at Nolan Catholic High School! Campus Ministry aims to make everything on our campus authentically Catholic, in order to form students who are obedient to Christ. I support our school chaplain, Father Metzler, as the Director of Campus Ministry.

The Christian Ministry Program cultivates an eagerness to serve in each of our students by making it easy for them to serve their community in concrete ways, fostering compassion for others as they are formed to be bold leaders. My hope is that through this program, they are strengthening a virtue of service to imitate Christ, as He said, "the Son of Man did not come to be served but to serve."

I look forward to meeting you and your new Nolan Catholic Viking classmates soon! Please feel free to contact me if you have any questions.

PAX VOBIS,
Dexter Sanchez
Director of Campus Ministry

Sacramental Life on Campus

Mass

All-School Mass
Every Thursday and
Holy Days of Obligation

Wednesdays at 7:10 AM
(when available)

Adoration

Fridays

Exposition at 7:30 AM
Reposition at 3:10 PM

Reconciliation

Fridays during lunch
periods and
all day first Fridays

From the Nurse

The Diocese requires a school/sports physical for all NEW students. This includes all of our new freshmen and any incoming transfer students. The Diocese also requires a new physical every year dated on or after May 21, 2025, of the new school year in order to participate/practice in, or play sports. Below is a blank health report you may print and take to your physician to complete. You can also access a copy through our website www.nolancatholic.org/MyNCHS.

If you have any questions or concerns, please contact Nurse Miller at 817-395-0434, or smiller@nchstx.org.

[Download Diocesan Health Report](#)

ECI Lunch Program

Nolan Catholic partners with ECI to provide daily lunch service for our students. All students wishing to purchase lunch on campus will need an active ECI account.

How to Set Up Your Student's Account:

1. Visit [Dining Pay](http://www.DiningPay.com) (www.DiningPay.com) to Create an Account
2. Select Create an Account and follow the prompts to set up your family profile.
3. Add your student(s) using their full name and school.
 - You will need student's PIN, which is there Student ID# in RenWeb
4. Load funds into the account using a credit/debit card or ACH payment.
5. You're ready to go! Students will be able to purchase lunch using their ECI account balance.

• Tip: Set up low-balance alerts so you're notified when funds need to be added.

For questions about the lunch program or account setup, please contact [ECI Customer Support](#).

[Download Dining Pay Tutorial](#)

Get Involved: The Viking Club



One of the best ways to get involved is through the Viking Club, a parent-led organization dedicated to supporting all school-approved athletic teams, organizations, and clubs.

The Viking Club is more than just fundraising: it's a service ministry. Members work together to raise funds, staff concessions at events, and provide hands-on support for our programs, all while living out Nolan Catholic's mission of Education in Faith, Formation in Hope, and Perseverance in Charity.

When you join the Viking Club, you're not only helping to fund important needs, you're building connections, fostering community, and showing our students what it means to serve with compassion and joy. Every dollar raised and every hour volunteered goes directly toward supporting our Vikings.

We invite you to prayerfully consider joining us this year. Your presence matters, your service makes a difference, and together, we can continue to make Nolan Catholic a place where faith, leadership, and service thrive.

Safe Environment Certification for Employees and Adult Volunteers is required prior to serving in ministry and must be renewed every two years. Volunteers must create a profile at www.virtusonline.org and add Nolan Catholic as a volunteer site. If you have any questions, contact Michelle Wessel, Nolan Catholic Safe Environment Coordinator at mwessel@nchstx.org; or search for a session www.fwdioc.org/training-sessions.

Contact your student's coach or director for ways you can get involved with a specific organization.

VIKING CLUB AT-A-GLANCE

Founded: Parent-led organization supporting all school-approved athletics, clubs, and organizations.

Ways to Help:

- Volunteer at concessions & events
- Support fundraisers
- Join planning committees
- Share your time, talents, & connections

Viking Club Events:

- April 10, 2026
Golf Tournament

Why Join?

- Strengthen our community
- Model Christlike leadership
- Directly support our Vikings

Contact:

Robyn Coffey, President

vikingclub@nchstx.org

www.nolancatholic.org/viking-club

Contact Information

Administration Team:

Clint Weber, President Susan LoCoco, Principal
Ryan Faller, Assistant Principal of Academics
Cindy Jung, Assistant Principal of Student Affairs
Mandy Lester, Dean of Academic Operations
Tom Roanhaus, Dean of Student Formation

Our Administration Team is here to help with any questions or concerns. You can contact us anytime at principal@nchstx.org, and a member of our team will ensure your message is directed to the right person.

Campus Ministry:

Father Brett Metzler, Chaplain
Dexter Sanchez, Director of Campus Ministry, dsanchez@nchstx.org

Attendance:

For reporting absences, late arrivals, early dismissals, or illness, please contact our Attendance Office.
attendance@nchstx.org | (817) 395-0379

Please include your student's full name, grade level, and reason for the absence in your message.

Verification of Enrollment: For driver's education, permit, etc.

Contact Michelle Wessel, Registrar, mwessel@nchstx.org or visit the Main Office

Student Accounts/Billing:

Contact Kimberlee Glover, Business Office, kglover@nchstx.org

Counselors:

Tina Perales, Last Name A-G, tperales@nchstx.org
Dr. Symionne Quarles, Last Name H-O, squarles@nchstx.org
Sodonia Johnson, Last Name P-Z, sjohnson@nchstx.org



NOLAN CATHOLIC
HIGH SCHOOL

4501 Bridge Street, Fort Worth, TX 76103
(817) 457-2920 | www.nolancatholic.org